



Global Cash Management & Payments Hub

FOR BANKS AND FINANCIAL INSTITUTIONS

View, forecast, and optimize your cash position with all accounts connected in one solution, whilst centralizing and automating all your payment activities.



SOLVE COMPLEXITY IN FINANCE TEAMS WITH MULTIPLE SYSTEMS, BANK ACCOUNTS, AND CURRENCIES THROUGH CENTRALIZED CASH VISIBILITY.

Cash Management Meets Payments Connectivity

Many financial institutions rely on multiple solutions and manual processes, including spreadsheets, to provide end-to-end management of cash and connection into global payment rails.

Bottomline's Global Cash Management & Payments Hub solves complexities for finance and operations teams by offering one user interface that empowers cash management automation and direct connectivity into global payment networks. It centralizes all payments operations across all banks globally, including all domestic and international payment types.

Automating the cash management process allows your institution to effortlessly replace manual processes whilst obtaining real-time cash visibility and full cash lifecycle management. Our solution offers a ubiquitous interface for all aspects of global cash visibility, forecasting, reconciliation, compliance, and payments connectivity.

Cash Management and Payments Connectivity works hand-in-hand with connection to multiple payment rails, including Bacs, Faster Payments, Swift, SEPA, and more. It encompasses a full payment engine based on ISO20022 formats, which processes any type of payment in any format with a single, simple, and intuitive user interface. Offering one single terminal for domestic and international financial messages.



Global Cash Management & Payments Hub offers a global workflow for:



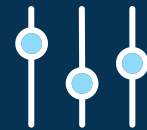
COMPLETE CASH
VISIBILITY IN ONE
CONSOLIDATED VIEW



CONNECTIVITY
INTO MULTIPLE
GLOBAL PAYMENTS
NETWORKS



CASH FORECASTING
& RECONCILIATION



COMPLETE CONTROL
OF THE BUSINESS
END-TO-END
PAYMENTS LIFECYCLE

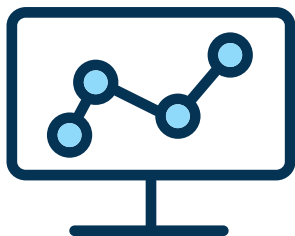
See Payments and Cash More Clearly

Full visibility of a financial institution's cash means consolidating key treasury data and presenting it as an organized financial analysis.

The key to achieving this comprehensive view is harnessing dependable, unbroken access to all the relevant cash flows in the institution's financial ecosystem. Many organizations fail to recognize the inefficiencies and risks of logging into multiple banking portals to manually extract and combine data into spreadsheets or other internal systems.

A combination of efficient SaaS technology and bank connectivity enables best-practice cash visibility. Support your institution's digital journey with our public cloud-hosted platform, which offers central visibility of the organization's global network of bank accounts. Forecast your expected cash by viewing your projected revenues, accounts payable and receivable, and payroll.

Your institution has a consolidated view of data across all relationships, geographies, subsidiaries, and currencies in one single platform. With such consolidated views of cash positions, your organization stays in control of cash in an increasingly complex and uncertain environment, and cash can be quickly mobilized to the best effect. **All of this, without the necessity for a full Treasury Management System (TMS), which has the potential to be far too complex and costly for individual institutions.**



**SECURELY MANAGE
PAYMENTS WITH JUST
A FEW CLICKS**

Centralize Your Payments Operations

Financial and Treasury stakeholders are faced with an ever-changing landscape of complexity and challenges. Managing multiple domestic and international bank accounts and payment types is both difficult and can create manually intensive processes. These can include the use of spreadsheets, which can lead to inaccuracies and a lack of real-time insights, not to mention the high cost and complexity of managing credentials across banking portals. Moreover, stakeholders must also consider the impact such processes can have on the operational efficiency of operations, as well as the never-ending fight to mitigate fraud risk.

Benefit from direct connections into all banking systems within one user interface. This automatically brings your payment data from your Asset Liability Management (ALM) system, ERP, or internal systems into one place.

Merge all payments operations and workflows with embedded security. Benefit from the ability to:

- **Control all aspects of your payment workflows, including access and multiple levels of approvals across payment operations.**
- **Leverage process automation to increase efficiency.**
- **Embed risk management within the payment process to prevent fraud and comply with industry regulations.**



Bottomline provides solutions in 92 countries around the world, including across Europe, Asia, and the US. We power over \$10 trillion of payments every year.

Central Connectivity to Multiple Payment Rails

The top priority for financial institutions is making domestic and international payments more efficient. Secondly, to have the capability to fully understand and manage your cash position with your counterparties. Reliable connectivity to your sponsor bank and the relevant chosen networks and clearings is essential for any compelling operational digital transformation journey.

Multiple payment networks such as Swift, SEPA, EBICS, Bacs, Faster Payment (FPS) and a whole host of other major global payment types are often essential for meeting key goals. However, the flexibility to integrate and cater for future connectivity options is also savvy. Starting with a built-in point of connectivity with centralized processing and monitoring will help to streamline and standardize your process and controls. This starting point positions your operational model to reduce friction and the overall cost of operations.

Choose Global Cash Management & Payments Hub to Optimize Your Cash

Bottomline's cash management solutions offer a better way to centralize, automate, and securely manage your domestic and global payment and bank connectivity needs.

Experience the benefits of one user interface and straight-through processes to manage your cash economically. Reduce costs and improve efficiency through automation and centralization.

[Book a Meeting](#)



About Bottomline

Bottomline helps businesses pay and get paid better, delivering payments and cash management technology to drive impactful results for businesses and financial institutions globally.

For more information, visit www.bottomline.com

© Copyright 2015 - 2024 Bottomline Technologies, Inc. All rights reserved.

Bottomline, Paymode, and the Bottomline logo are trademarks or registered trademarks of Bottomline Technologies, Inc. All other brand/product names are the property of their respective holders.

REV UK092524LD

Corporate Headquarters
100 International Drive, Suite 200
Portsmouth, NH 03801
United States of America

Phone: +1-603-436-0700
Toll-free: +1-800-243-2528
info@bottomline.com

Europe, Middle East, Africa Headquarters
1600 Arlington Business Park
Theale, Reading, Berkshire RG7 4SA
United Kingdom

Tel (Local): 0870-081-8250
Tel (Int): +44-118-925-8250
emea-info@bottomline.com